



Micro Communications, Inc.

# COAX BREAK-AWAY SECTION



- **Simplifies Transmitter Tube Removal**
- **Easy to Assemble**
- **Custom Replacements**
- **Positive Connections**

MCI's coax break-away provides an easy way to remove transmitting tubes without the need to disassemble many coax components. This two piece structure will replace the existing vertical stack at the output of the tube. Directional couplers and voltage probes can be supplied and set to existing values.

With the break-away in place, the physical work required to remove a tube from service for repair and maintenance is simplified. A positive contact sleeve contains the outer halves of the coax, while the inner conductor is formed into two adjoining angled sections connected via a locking bolt. Alignment at assembly is accomplished with a tapered pin which aligns the two inner halves.

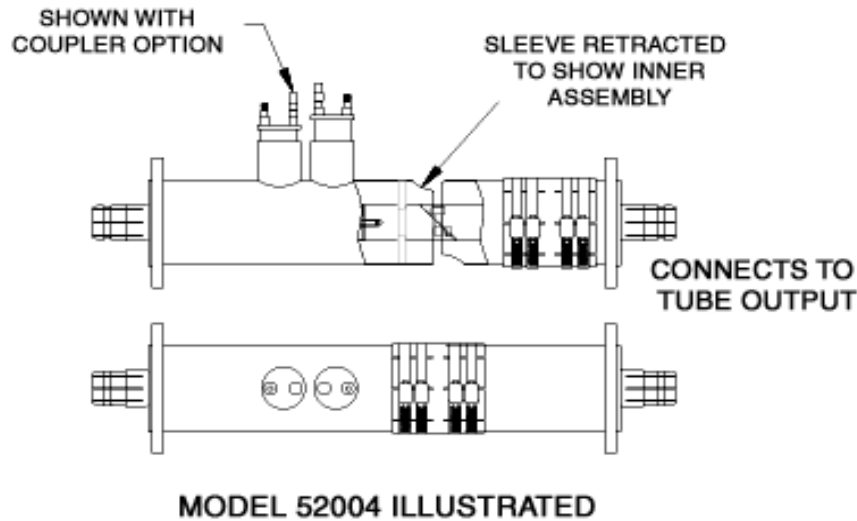
To remove the tube, the outer sleeve is loosened and moved out of the way. Next the locking bolt holding the two inner halves is removed. The assembly is now in two sections, with the upper section securely attached to the cabinet. The tube now can be rolled out of position and replaced or repaired. With the upper section in a fixed position, the tube and lower break-away section can be rolled into position. Alignment between the two halves of the break-away is accomplished with a guide pin. The guide pin aligns the inner halves and the locking bolt is tightened to secure the inner assembly. The outer sleeve is moved into position and secured.

The coax break-away section is available in 3 1/8 and 4 1/16 EIA sizes. Other sizes are available upon special request.



Micro Communications, Inc.

**SERIES 50000  
COAX BREAK-AWAY SECTION**



	Number of couplers 0	Number of couplers 1	Number of couplers 2
MODEL	50004	51004	52004
POWER (peak)	70 kW	70 kW	70 kW
LENGTH	specify	specify	specify
WEIGHT	6 lbs + 4 lbs/ft	10 lbs + 4 lbs/ft	14 lbs + 4 lbs/ft
CONNECTORS	4 1/16 EIA	4 1/16 EIA	4 1/16 EIA
MODEL	50003	51003	52003
POWER (peak)	to 60 kW	to 60 kW	to 60 kW
LENGTH	specify	specify	specify
WEIGHT	5 lbs + 3 lbs/ft	9 lbs + 3 lbs/ft	13 lbs + 3 lbs/ft
CONNECTORS	3 1/8 EIA	3 1/8 EIA	3 1/8 EIA
MODEL	50002	51002	52002
POWER (peak)	10kW	10kW	10kW
LENGTH	specify	specify	specify
WEIGHT	2 lbs + 1 lb/ft	6 lbs + 1 lb/ft	10 lbs + 1 lb/ft
CONNECTORS	1 5/8 EIA	1 5/8 EIA	15/8 EIA

All specifications are subject to change without notice.

**AVAILABLE OPTIONS:**

Unflanged connections: change 4th digit in model number to a "1".

RF sampling probes: change third digit in model number to desired quantity, "1" etc...

3 or more couplers: -change second digit in model number to "3" or "4", etc...

**NOTE:** Top half of break-away section must be secured (fixed) to cabinet wall by customer to allow proper operation.



Micro Communications, Inc.

Micro Communications, Inc - A Mega Industries Company  
28 Sanford Dr. Gorham Maine 04038 Phone: 207.854.1700 Fax: 207.854.2287  
Email: sales@megaind.com Web: www.megaind.com