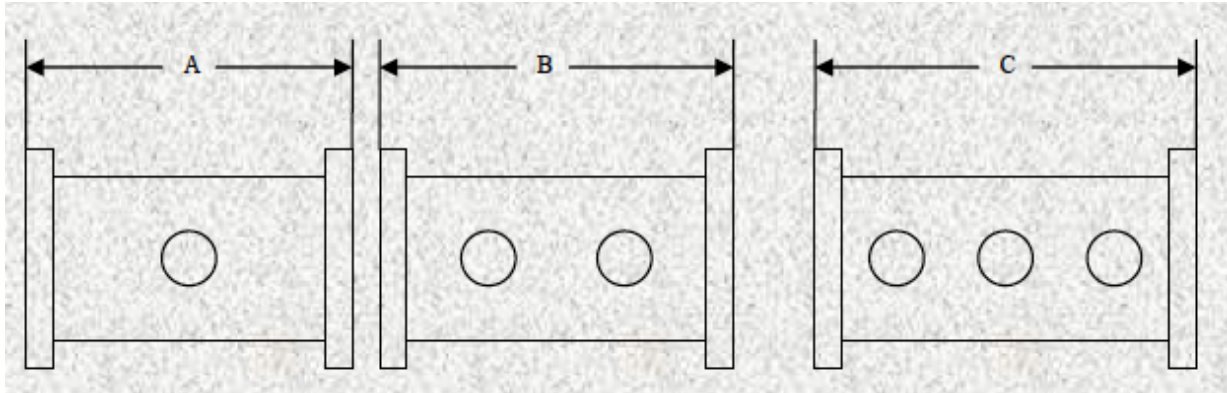




Mega Industries single, double and triple loop couplers are utilized for reflectometer measurements and power monitoring in waveguide transmission systems. With multi loop couplers the couplers can be set at different coupling values for forward and reverse waves to optimize the dynamic range. All electrical calibration is directly traceable to the National Bureau of Standards.

The following nominal specifications for these couplers are applicable over a 10% waveguide band- width:

| | |
|---------------------|-----------------------------|
| Mainline VSWR: | 1.05:1 |
| Sidarm VSWR: | 1.25:1 |
| Coupling Factor: | 40 to 75 dB \pm 1.0 dB |
| Coupling variation: | \pm 1 dB |
| Directivity: | 27 dB Nominal Insertion |
| Loss: | Less than 0.05 dB |
| Terminations: | Included, External two watt |



| Waveguide Size | WR2300 | WR2100 | WR1800 | WR1500 | WR1150 | WR975 | WR770 | WR650 |
|-------------------------|---------------|---------------|---------------|---------------|---------------|---------------|---------------|---------------|
| Monitor Cat. No. | 3019100 | 3119100 | 3219100 | 3319100 | 3419100 | 3519100 | 3619100 | 3719100 |
| A Inches (mm) | 12 (304.8) | 12 (304.8) | 12 (304.8) | 8 (203.2) | 8 (203.2) | 8 (203.2) | 8 (203.2) | 8 (203.2) |
| Reflectometer Cat. No. | 3019200 | 3119200 | 3219200 | 3319200 | 3419200 | 3519200 | 3619200 | 3719200 |
| B Inches (mm) | 12 (304.8) | 12 (304.8) | 12 (304.8) | 12 (304.8) | 12 (304.8) | 12 (304.8) | 12 (304.8) | 12 (304.8) |
| Triple Coupler Cat. No. | 3019300 | 3119300 | 3219300 | 3319300 | 3419300 | 3519300 | 3619300 | 3719300 |
| C Inches (mm) | 18 (457.2) | 18 (457.2) | 18 (457.2) | 15 (381) | 15 (381) | 15 (381) | 15 (381) | 15 (381) |

| Waveguide Size | WR510 | WR430 | WR340 | WR284 | WR229 | WR187 | WR159 | WR137 |
|-------------------------|---------------|---------------|---------------|--------------|--------------|--------------|--------------|--------------|
| Monitor Cat. No. | 3819100 | 4019100 | 4119100 | 4219100 | 4719100 | 4819100 | 4919100 | 5019100 |
| A Inches (mm) | 6 (152.4) | 6 (152.4) | 5 (127) | 4 (101.6) | 4 (101.6) | 4 (101.6) | 4 (101.6) | 4 (101.6) |
| Reflectometer Cat. No. | 3819200 | 4019200 | 4119200 | 4219200 | 4719200 | 4819200 | 4919200 | 5019200 |
| B Inches (mm) | 12 (304.8) | 12 (304.8) | 8 (203.2) | 6 (152.4) | 6 (152.4) | 6 (152.4) | 6 (152.4) | 6 (152.4) |
| Triple Coupler Cat. No. | 3819300 | 4019300 | 4119300 | 4219300 | 4719300 | 4819300 | 4919300 | 5019300 |
| C Inches (mm) | 12 (304.8) | 12 (304.8) | 12 (304.8) | 8 (203.2) | 8 (203.2) | 8 (203.2) | 8 (203.2) | 8 (203.2) |