



Adjustable Coupling Style

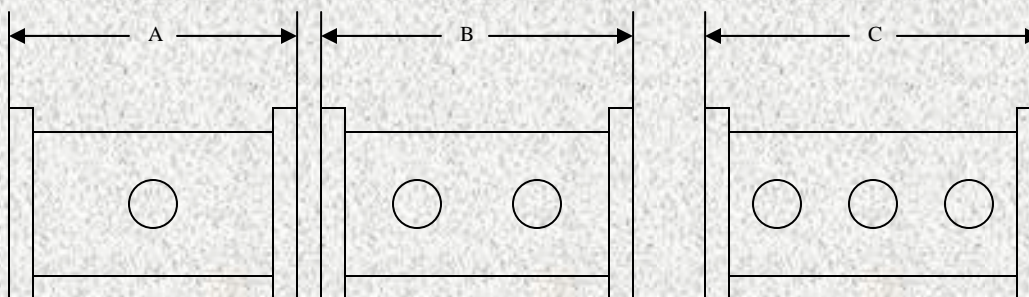


Fixed Coupling Style

Mega Industries single, double and triple loop couplers are utilized for reflectometer measurements and power monitoring in waveguide transmission systems. With multi loop couplers the couplers can be set at different coupling values for forward and reverse waves to optimize the dynamic range. All electrical calibration is directly traceable to the National Bureau of Standards.

The following nominal specifications for these couplers are applicable over a 10% waveguide bandwidth:

Mainline VSWR:	1.05:1
Sidarm VSWR:	1.25:1
Coupling Factor:	40 to 75 dB $\pm$ 1.0 dB
Coupling variation:	$\pm$ 1 dB
Directivity:	27 dB Nominal
Insertion Loss:	Less than 0.05 dB
Terminations:	Included, External two watt



Waveguide Size	WR2300	WR2100	WR1800	WR1500	WR1150	WR975	WR770	WR650
Monitor Cat. No.	3019100	3119100	3219100	3319100	3419100	3519100	3619100	3719100
A Inches (mm)	12 (304.8)	12 (304.8)	12 (304.8)	8 (203.2)	8 (203.2)	8 (203.2)	8 (203.2)	8 (203.2)
Reflectometer Cat. No.	3019200	3119200	3219200	3319200	3419200	3519200	3619200	3719200
B Inches (mm)	12 (304.8)	12 (304.8)	12 (304.8)	12 (304.8)	12 (304.8)	12 (304.8)	12 (304.8)	12 (304.8)
Triple Coupler Cat. No.	3019300	3119300	3219300	3319300	3419300	3519300	3619300	3719300
C Inches (mm)	18 (457.2)	18 (457.2)	18 (457.2)	15 (381)	15 (381)	15 (381)	15 (381)	15 (381)

Waveguide Size	WR510	WR430	WR340	WR284	WR229	WR187	WR159	WR137
Monitor Cat. No.	3819100	4019100	4119100	4219100	4719100	4819100	4919100	5019100
A Inches (mm)	6 (152.4)	6 (152.4)	5 (127)	4 (101.6)	4 (101.6)	4 (101.6)	4 (101.6)	4 (101.6)
Reflectometer Cat. No.	3819200	4019200	4119200	4219200	4719200	4819200	4919200	5019200
B Inches (mm)	12 (304.8)	12 (304.8)	8 (203.2)	6 (152.4)	6 (152.4)	6 (152.4)	6 (152.4)	6 (152.4)
Triple Coupler Cat. No.	3819300	4019300	4119300	4219300	4719300	4819300	4919300	5019300
C Inches (mm)	12 (304.8)	12 (304.8)	12 (304.8)	8 (203.2)	8 (203.2)	8 (203.2)	8 (203.2)	8 (203.2)