

Directions

From the South

Maine Turnpike (I-95 North)

Take exit 47 (Rand Road), Turn Left at Light

Turn Left at Second Light (Route 25)

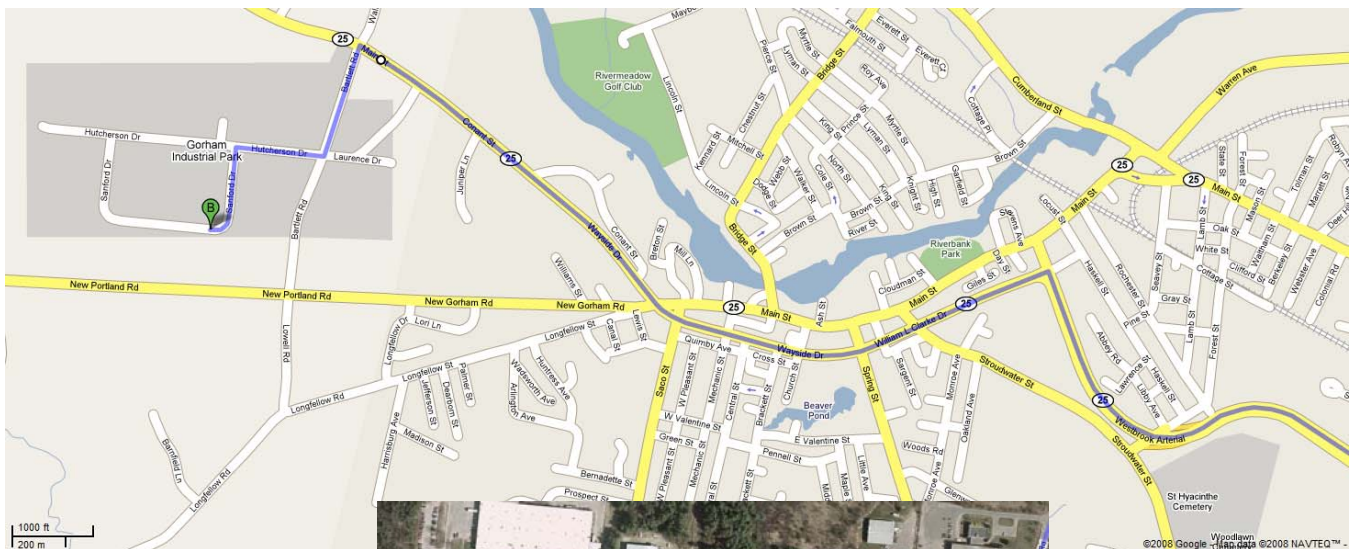
You will pass through 5 traffic lights (go straight, stay in right lane)

Continue about 8/10 mile on Route 25 past VFW hall (on left) and take a left onto Bartlett Road

After ¼ mile take Right onto Hutcherson Drive (Gorham Industrial Park)

Take first left onto Sanford Drive

Mega Industries is 3rd drive on the right, located just after the turn in the road



Mega Industries

Airports

PWM

The closest airport is the Portland International Jetport. (<http://www.portlandjetport.org/>)

Carriers currently serving this airport are:



BOS

Boston's Logan Airport (<http://www.massport.com/logan>) is the closest major airport with regularly scheduled international flights. It is within driving distance from Mega Industries, though the drive will take 2-1/2 hours and is about 110 miles from the factory.

There is also bus transportation regularly scheduled between Logan Airport and Portland, Maine and a train that runs from Boston to Portland as well.

MHT

Manchester, New Hampshire also has an airport that has service provided by the major carrier Southwest Airlines.



It is within driving distance from Mega Industries, though the drive will take 2-1/2 hours and is about 90 miles from the factory.

Area Lodging

Greater Portland is host to most major lodging chains and the variety of location is as great as the range of price. If you choose to stay near the airport, we suggest:

Hampton Inn, South Portland

171 Philbrook Avenue, South Portland, Maine, USA 04106
Tel: +1-207-773-4400 Fax: +1-207-773-6786