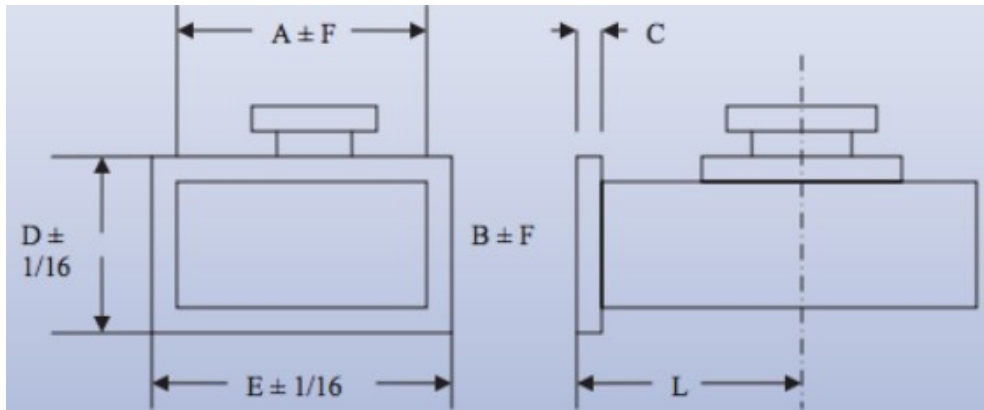




Mega Industries WR1500 Transitions to Coaxial are manufactured to precise tolerances. For laboratory testing or other low power applications, we recommend “Probe type” transitions to type “N” coaxial line; while our low VSWR “cross-bar” design provides optimum electrical performance for high power applications.



A	15.00 inches
B	7.50 inches
C	0.44 inches
D	11.00 inches
E	18.50 inches
F	0.15 inches
L	12 inches
Wall Thickness	0.125 inches
Max Pressure	0.25 PSIG