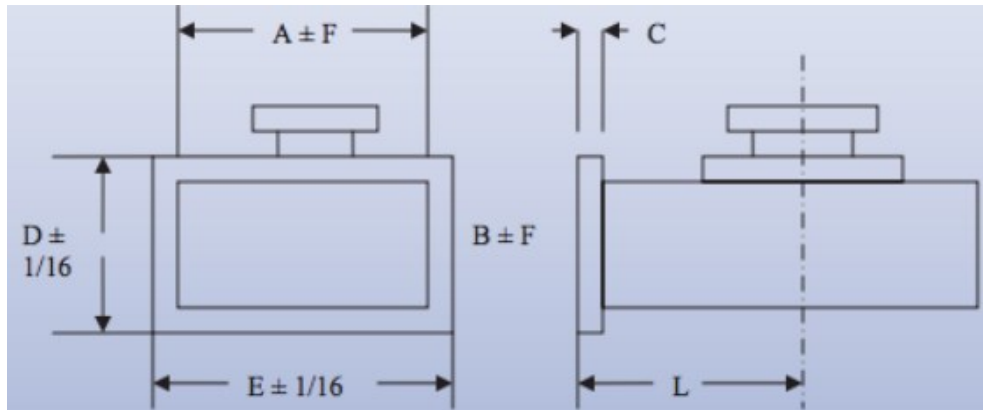




Mega Industries WR650 Transitions to Coaxial are manufactured to precise tolerances. For laboratory testing or other low power applications, we recommend “Probe type” transitions to type “N” coaxial line; while our low VSWR “cross-bar” design provides optimum electrical performance for high power applications.



A	6.50 inches
B	3.25 inches
C	0.44 inches
D	5.44 inches
E	8.68 inches
F	0.005 inches
L	6 inches
Wall Thickness	0.125 inches
Max Pressure	1.5 PSIG