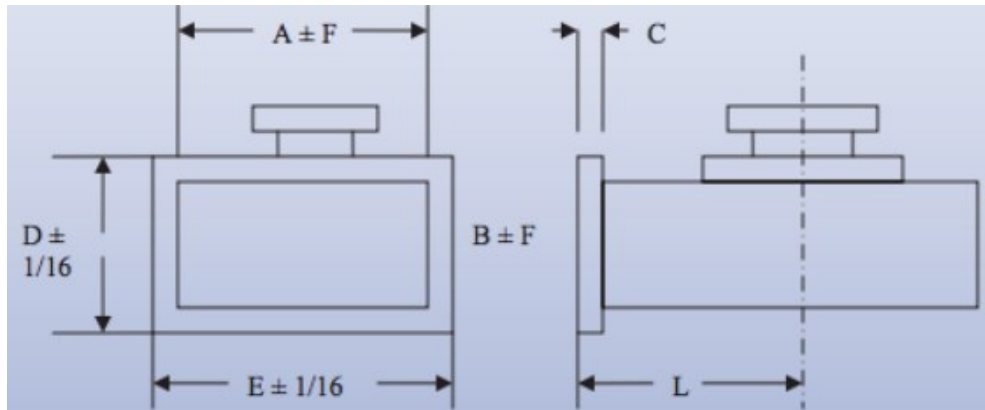




Mega Industries WR770 Transitions to Coaxial are manufactured to precise tolerances. For laboratory testing or other low power applications, we recommend “Probe type” transitions to type “N” coaxial line; while our low VSWR “cross-bar” design provides optimum electrical performance for high power applications.



A	7.70 inches
B	3.85 inches
C	0.44 inches
D	7.38 inches
E	11.22 inches
F	0.10 inches
L	6 inches
Wall Thickness	0.125 inches
Max Pressure	1.00 PSIG