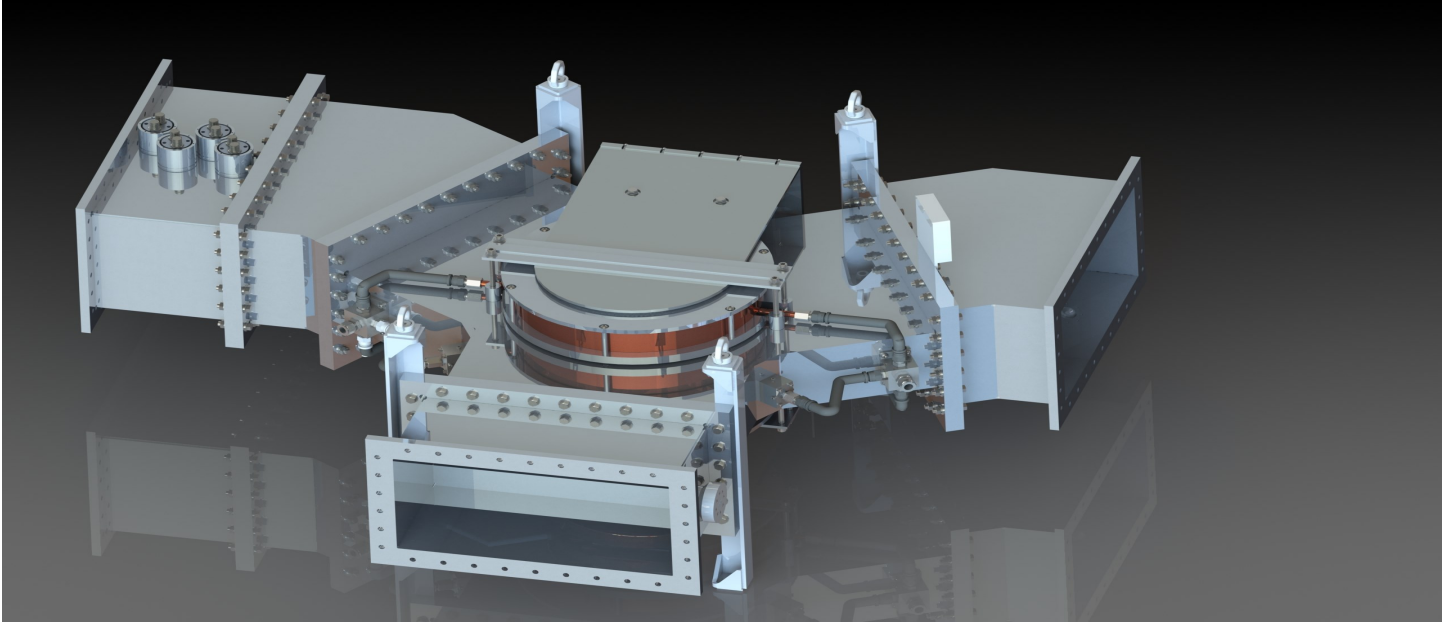


## WR1800, 350kW, UHF Circulator

# Microwave

TECHNIQUES LLC



Microwave Techniques WR1800, 350kW circulator solutions place emphasis on the selection and bias point of ferrite material to minimize insertion loss and maximize isolation at the frequency, bandwidth and power level of interest. The design and power handling of a circulator is determined by the sum of the forward and reflected power, the latter being a result of any mismatch present at the output of the device. The following specifications apply to a WR1800, 350kW, UHF circulator:

Frequency	497 MHz to 501 MHz
Forward Power	350 kW CW
Reverse Power (any phase)	350 kW
Insertion Loss at $F_0$	$\leq 0.1$ dB
Insertion Loss within band	$\leq 0.15$ dB
Isolation within band	$\geq 26$ dB
Return loss within band	$\geq 26$ dB
Bi-directional coupler port type	N-Type Female
Coupler Fwd/Rev coupling	$-50 \pm 0.1$ dB
Cooling Pressure	145 psig
Cooling Test Pressure	218 psig for 10 minutes
Cooling Flow Rate	8 Gallons (30.28 L) per minute