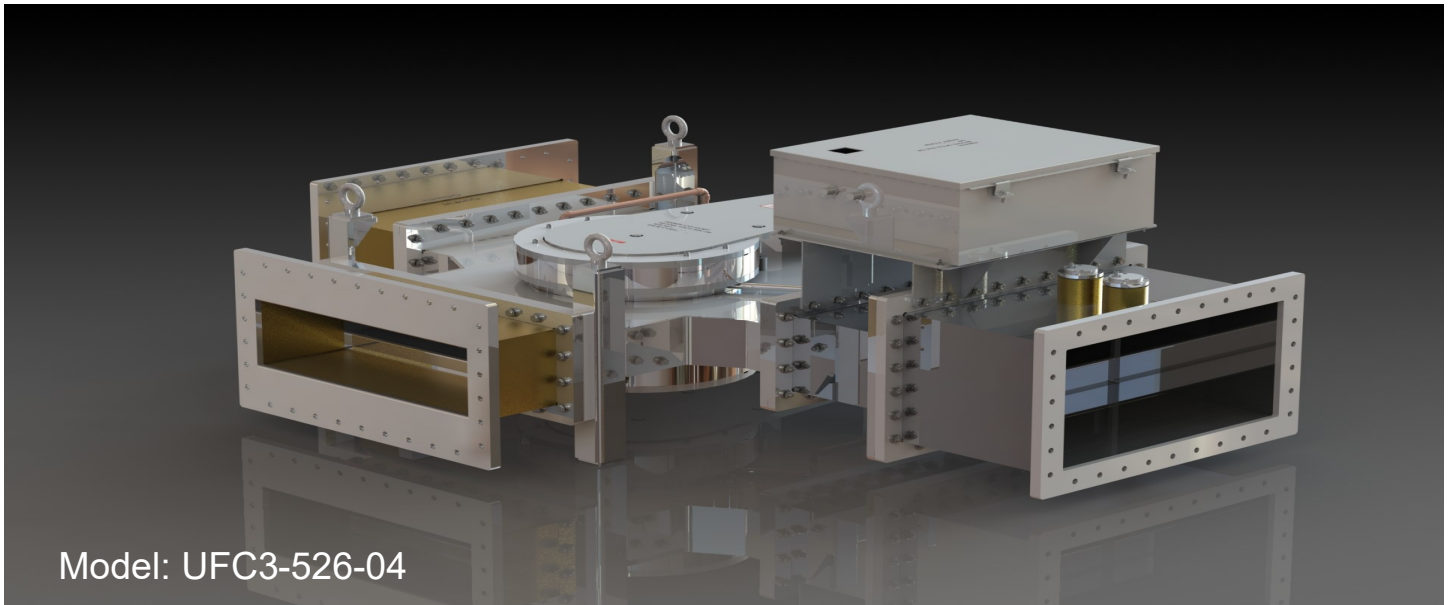


## WR1800, UHF Circulator



Model: UFC3-526-04

Microwave Techniques WR1800 UHF circulator solutions place emphasis on the selection and bias point of ferrite material to minimize insertion loss and maximize isolation at the frequency, bandwidth and power level of interest. The design and power handling capability of a circulator is determined by the sum of the forward and reflected power, the latter being a result of any mismatch present at the output of the device. The following specifications apply to a WR1800 UHF circulator:

Frequency	495 to 505 MHz
Max RF Power FWD/REV	150 kW CW
Insertion Loss F0	0.05 dB max
Insertion Loss BW	0.15 max
Isolation F0	> 20 dB
Isolation BW	> 26 dB

**Material:** Waveguide System: Aluminum 6061-T6

**Cooling System:** Copper and Stainless Steel

**Finish:** Chromate Golden per MIL-DTL-5541

**Flanges:** WR-1800 Flat

**Coolant Flow Requirement:** 34 Liters per minute (9 Gallons per minute)

**Applications:** source protection with Magnetrons, TWT's, Klystrons & Solid State Amplifiers