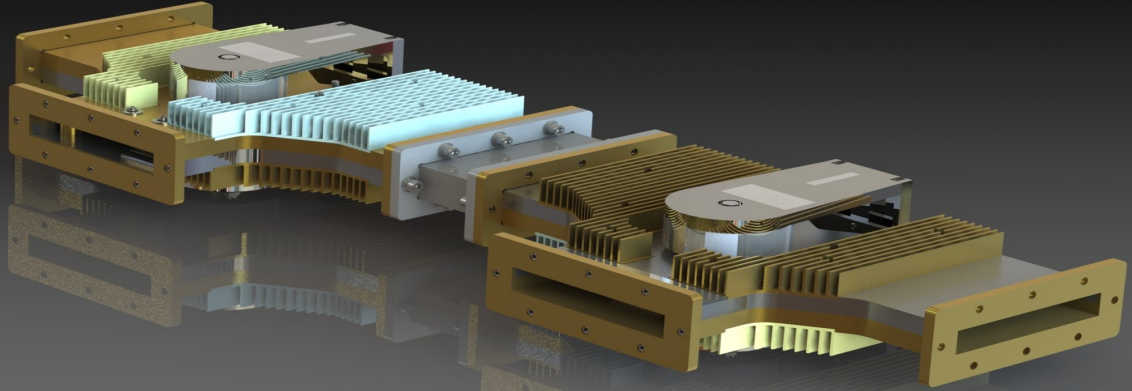


WR650, L-Band Dual Junction Duplexer



Model Number: LC3-533

Microwave Techniques WR650, L-Band duplexer solutions place emphasis on the selection and bias point of ferrite material to minimize insertion loss and maximize isolation at the frequency, bandwidth and power level of interest. The design and power handling capability of a circulator is ultimately determined by the sum of the forward and reflected power, the latter being a result of any mismatch present at the output of the device. Typical design includes WR-650 flat flanges, and weighs 34kg (74.96 lbs.). The following specifications apply to a WR650, L-Band dual junction duplexer:

Frequency	1215 to 1350 MHz
Peak Power	70 kW
Average Power	7.0 kW
Pulse Width	1 to 300 microseconds
VSWR	1.22 : 1 max, all ports
Insertion Loss - TX Port to ANT Port	0.68 dB max
Insertion Loss - ANT Port to RX Port	0.34 dB max
Isolation ANT Port to TX Port	-40 dB min
Isolation TX Port to RX Port	-20 dB min

Environments: Land, Mobile, Naval and Airborne

Application: Air Traffic Control Radar Systems