



Mega Industries single, double, and triple loop waveguide couplers are utilized for reflectometer measurements and power monitoring in waveguide transmission systems. With multi loop couplers, the couplers can be set at different coupling values for forward and reverse waves to optimize the dynamic range. All electrical calibration is directly traceable to the bureau of national standards. Contact sales@microwavetechniques.com for more information

Mainline VSWR:	1.05 : 1
Sidearm VSWR:	1.25 : 1
Coupling Factor:	40 to 75 dB \pm 1.0 dB
Coupling Variation:	\pm 1 dB
Directivity:	27 dB Nominal Insertion
Loss:	Less than 0.05 dB
Terminations:	Included, External two watt

MEGA CATALOG NUMBERS:

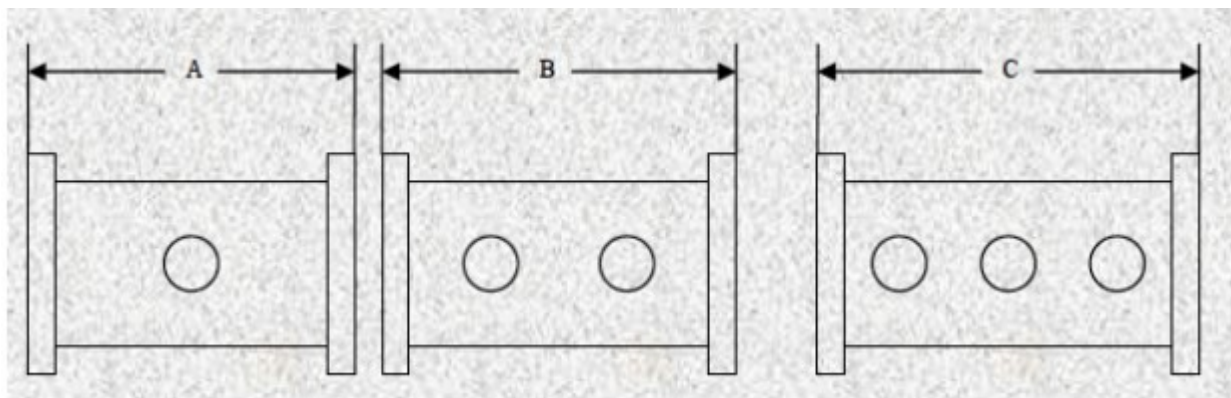
SIZE	WR2300	WR2100	WR1800	WR1500	WR1150	WR975	WR770
MONITOR	301904000	311904000	321904000	331903000	341903000	351903000	361903000
REFLECTOMETER	301904010	311904010	321904010	331904010	341903010	351903010	361903010
TRIPLE COUPLER	301904020	311904020	321904020	331904020	341903020	351903020	361903020

SIZE	WR650	WR430	WR340	WR284	WR229	WR187	WR159
MONITOR	371903000	391903000	401902000	411902000	421901000	431901000	441901000
REFLECTOMETER	371903010	391903010	401902010	411902010	421901010	431901010	441901010
TRIPLE COUPLER	371903020	391903020	401902020	411902020	421901020	431901020	441901020

Waveguide Directional Couplers



Mega Industries single, double, and triple loop waveguide couplers are utilized for reflectometer measurements and power monitoring in waveguide transmission systems. With multi loop couplers, the couplers can be set at different coupling values for forward and reverse waves to optimize the dynamic range. All electrical calibration is directly traceable to the bureau of national standards. Contact sales@microwavetechniques.com for more information.



SIZE	WR2300	WR2100	WR1800	WR1500	WR1150	WR975	WR770
MONITOR	12	12	12	8	8	8	8
A inches (mm)	(304.8)	(304.8)	(304.8)	(203.2)	(203.2)	(203.2)	(203.2)
REFLECTOMETER	12	12	12	12	12	12	12
B inches (mm)	(304.8)	(304.8)	(304.8)	(304.8)	(304.8)	(304.8)	(304.8)
TRIPLE COUPLER	18	18	18	15	15	15	15
C inches (mm)	(457.2)	(457.2)	(457.2)	(381)	(381)	(381)	(381)

SIZE	WR650	WR430	WR340	WR284	WR229	WR187	WR159
MONITOR	8	6	6	4	4	4	4
A inches (mm)	(203.2)	(152.4)	(152.4)	(101.6)	(101.6)	(101.6)	(101.6)
REFLECTOMETER	12	12	8	6	6	6	6
B inches (mm)	(304.8)	(304.8)	(203.2)	(152.4)	(152.4)	(152.4)	(152.4)
TRIPLE COUPLER	15	12	12	8	8	8	8
C inches (mm)	(381)	(304.8)	(304.8)	(203.2)	(203.2)	(203.2)	(203.2)